

EVENT PROGRAMME

BRISTOL
WOMEN'S
VOICE

2026 INTERNATIONAL WOMEN'S DAY CELEBRATION

**FREE
EVENT**

Saturday 7 March, Bristol City Hall

All day followed by Iftar

Everyone welcome Over 50 workshops, talks, panel debates, performances, & many more activities!

FREE creche, interpreting & accessibility support available



BRISTOL
WOMEN'S
VOICE



All information was accurate
at the time of printing.
Programme liable to last
minute changes.

WELCOME TO THE INTERNATIONAL WOMEN'S DAY CELEBRATIONS 2026!

Bristol Women's Voice works to make women's equity a reality in Bristol through campaigning, connecting and celebrating.

We hope that today will do all three of these things with our broad programme of events centred around the theme of **Connection** and **Common Ground**, exploring what women can achieve together and their role in promoting peace.

The day features workshops fostering **community cohesion**, art exhibitions in the Vestibules on Deanery Road and Park Street, and panel discussions on topics including women's inclusion in economic growth and in the workplace, tackling misogyny, mothering through challenging times, finding common ground to connect communities, women and the environment, and women's health, alongside workshops on movement, wellbeing, history and craft.

This event is completely free, and your donations are crucial to keep it free and

accessible to women who might not be able to attend if it wasn't. We have merchandise and raffle tickets for sale on our Bristol Women's Voice desk in the main hall and you can scan the QR code on the back page to donate.

This year, we are delighted to hold an Iftar in collaboration with Somali Kitchen, Sagada and Muslims4Bristol from 17.30. Due to catering requirements, the Iftar is for ticket holders only.

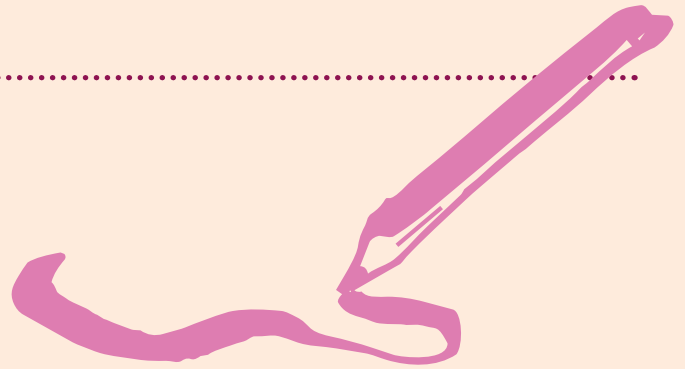
We are pleased to partner with SARSAS, Next Link and Safe Link to produce the programme this year; you can find their programme of activities in the Puerto Morazon room.

We thank all the amazing individuals and groups who generously donate their time to make today possible and hope that you will enjoy the exciting and varied programme they bring.

In sisterhood,
The Bristol Women's Voice team



THINGS TO NOTE



Our Values

Bristol Women's Voice works to ensure our International Women's Day event reflects our values: **Empowering, Transparent, Inclusive, and Nurturing.** While we foster celebration and connection, we cannot be responsible for external content. We will not tolerate behaviour or comments that are, or perceived to be, abusive, discriminatory or just unkind. Today is for everyone.

Photos

Photos will be taken for our website, promotions, and social media. If you prefer not to be included, please wear a sticker from the Bristol Women's Voice desk.

Flyering

Speakers' views are their own and not necessarily those of Bristol Women's Voice. We do not endorse or allow flyer distribution at the event inside or outside City Hall.

Creche

A first-come, first-served, free creche ran by Caroline's Creche is available in two-hour slots in rooms **IP04** and **IP08**. Visit these rooms for more details.

Buggy Park

A buggy park is available in the right-hand entrance to the council chamber.

Prayer Room

Tbilisi room is a designated quiet space for prayer.

Language Interpretation

British Sign Language (BSL) interpreters and interpreters for a variety of community languages, including Somali and Arabic are available on a first-come, first-serve basis. Book in advance or find out more on the day at the Bristol Women's Voice Desk in the foyer.

Accessibility

There is level access into the building. There are accessible toilets on the same floor as the event. **There is a Changing Places toilet next to the Tbilisi room.**

Support

If you have any accessibility requirements, please visit **Bristol Disability Equality Forum** in the main hall who will support you.

Hearing Loops

The Council Chamber and the main hall have integrated hearing loops. There are two portable hearing loops. You can find out more from the Bristol Disability Equality Forum support desk.

Quiet Room

Room **IP03** has been designated as a quiet room for those who need a breather. This can be located on the map.



PERFORMANCES

10.15-10.30

Opening Remarks

📍 MAIN HALL

We are pleased to welcome Councillor Heather Mack, Deputy Leader of Bristol City Council and Green Party Councillor for Lockleaze to deliver an opening address alongside Bonny Chung, Vice Chair and Katy Taylor, Bristol Women's Voice Chief Executive Officer.

10.30-10.45

Opening Performances

📍 MAIN HALL

Poet Muneera Pilgrim will perform an ode to women's collective power and possibility. Her poem is a powerful reflection on women's strength in this moment; it celebrates healing and the beauty of truly seeing one another. It honours our brilliance, shared achievements, and the hope we carry forward.

Bristol Jets is a student-led sports group run by committee members and team captains, all who have been elected by fellow members because they share a genuine love and passion for the sport and club. They will open the day with an energising performance especially for International Women's Day 2026.

16.00-16.10

Raffle Ticket Prize Draw

📍 HANNOVER ROOM

Find out the raffle prize winners! Purchase a raffle ticket from Bristol Women's Voice stand in the Main Hall.

17.30-19.00

Iftar

📍 MAIN HALL

Join us for Iftar as we break the fast this Ramadan. At sunset (6:03pm), we'll share food from Somali Kitchen and Sagada CIC after the call to prayer by Muslims4Bristol. Please note: this event is open to pre-booked ticket holders only due to catering requirements.





EXHIBITIONS

11.00-16.00

Uncovering Bristol's Hidden Activities

📍 PARK ST VESTIBULES

Bristol Women's Voice has developed a deck of cards with illustrations and stories of inspirational historical women from Bristol. Women who made a difference, but whose stories may not be told often. This exhibition will showcase the wonderful artwork created by Bristol-based artists, which is featured on the cards.

11.00-16.00

Shine a Light on Care

📍 DEANERY RD VESTIBULES

Shine a Light on Care is an exhibition curated by Bristol Women's Voice that brings together the voices and creativity of Bristol's caring community. It features handcrafted lanterns and strike placards made by women and carers across the city to call for greater recognition and support for mothers, parents and carers in workplaces and society.

13.00-16.30

Reflection Zone

📍 THE FOYER

Share your feedback on this year's event and suggest themes for next year using our interactive boards. Help shape future celebrations and keep our community inspired.

11.00-16.00

Where Dance Happens, Things Get Healed

📍 THE FOYER

Tell us where you would like to gift a dance in Bristol. In this interactive exhibition, we show strings of our thoughts, feelings, doings, and knowings that pass between us and places in the city.

11.00-15.00

Messages of Hope

📍 OUTSIDE

As part of this participatory display, we invite visitors to write Messages of Hope on ribbons and tie them along the railings leading to City Hall. Each ribbon carries a wish, a dream, an expression of hope, creating a collective artwork that celebrates women's voices, community power, and our collective hope for a fairer and kinder future.



The Vestibules

The Vestibules are two former entrances located at either end of City Hall. To access the exhibitions, please use the former vestibule entrance to City Hall on Park Street and Deanery Road. There will be a board outside directing you to the space.

Accessibility

The Park Street Vestibule and Deanery Road Vestibule is fully wheelchair accessible. Unfortunately, there is no toilet access for visitors through the Vestibules, toilets are located inside City Hall.

FOOD & DRINK

Daytime

Doritidas Gourmet

Doritidas Gourmet is a small Colombian food stand run by Natalia, offering an authentic taste of Colombian culture. Each product is handcrafted using ingredients like corn, yuca, plantain, and the vibrant flavours of the Colombian Caribbean.

Cupcakes by Isra

Isra is a Sudanese baker and artist based in Bristol. She makes handcrafted cupcakes designed as both art and dessert.

Ababo Cuisine

Ababo's Cuisine brings authentic Ethiopian flavours to Bristol. Based at Eastside Community Centre and established by Meriam Ababo in 2024, Ababo's Cuisine serves traditional dishes like Misir Wot on freshly made injera. With gluten-free, vegan, and halal options available.

Modele's Kitchen

Modele's Kitchen serves authentic West African cuisine with creative cultural fusions, like their signature Gizdodo Tacos blending Nigerian and Mexican flavours.

Janifa's Kitchen

Janifa is a plant-based chef with over 20 years experience, having taught at the now defunct, female-led, Demuths Cookery School for many years. Janifa explores ideas of migration via the cuisines along the ancient spice routes, something which reflects generations of her own family.

Iftar/Evening Meal

Somali Kitchen

Somali Kitchen is a not-for-profit CIC bringing together women from minority and ethnic groups around the themes of healthy food, healthy families and healthy lifestyles. Somali Kitchen is run by Somali and other migrant women for women from migrant backgrounds who are living in Bristol.

Sadaga

Sadaga was established in 2006 by a small group of Arabic speakers who were dedicated to actively reaching out to other women from similar backgrounds where Arabic was their main language.



PANEL DISCUSSIONS

 **Bordeaux Rooms**

11.00-12.15

Women, Care and Climate: A Gender Lens on Climate Change and How We Can Take Action Locally

CHAIR

Megan Belcher, Bristol Disability Equality Forum

PANELLISTS

Cllr. Kirsty Tait, Bristol City Council
Lizzi Testani, Bristol Climate & Nature Partnership
Veronica Wignall, Ad Free Cities

12.30-13.45

Tackling Misogyny: Holistic Approaches to Smashing the Patriarchy

CHAIR

Katy Taylor, Bristol Women's Voice

PANELLISTS

Chardine Taylor Stone, Writer, Cultural Producer and Black Feminist Activist
Clare Moody, Avon & Somerset Police
Oliver Biggs, Men Acknowledging Patriarchy
Dr Nadia Aghtaie, University of Bristol
Cllr. Stephen Williams, Bristol City Council
Alex Wood, Safe Link Plus

14.00-15.15

Finding Common Ground: Connecting Communities in Difficult Times

CHAIR

Sado Jirde, Black South West Network

PANELLISTS

Alex Raikes, Stand Against Racism and Inequality
Finn Mackay, UWE
Kamaljit Poonia, Equality, Diversity and Inclusion Specialist & Coach and Facilitator
Cllr. Lorraine Francis, Bristol City Council
Melissa Blackburn, Lockleaze Neighbourhood Trust

15.45-17.00

Making AI Work for Women: Opportunities, Threats and Beating the Bias

CHAIR

Katherine Ferris, BMT

PANELLISTS

Dr. Beatriz Costa Gomes, Microsoft AI Future
Chloe Meineck, Knowle West Media Centre
Dr Charlotte Kate Dodd, Ove Care Ltd
Dr Coral Manton, Bath Spa University



📍 Council Chambers

11.00–12.15

Women, Entrepreneurship and the Realities of Building Work Around Life

CHAIR

Bianca Jones, EDP Training Ltd.

PANELLISTS

Faye Dicker, Founder of Freelance Mum

Dr Nkechi Adeeko, University of Bristol Business School

Dr Roman Barwinski, University of Bristol Business School

Panel curated by the Bristol Women in Business Charter

14.00–15.30

Inclusive Growth: Building Economies that Work for Women

CHAIR

Sue Cohen, Economic Task Group West of England Women's Commission

PANELLISTS

Cllr. Heather Mack, Bristol City Council
Helen Godwin, West of England

Combined Authority

Dr Ruth Badru, University of Bristol

Samah Krichah, Women's Budget Group

Kathryn Delve, Westcountry Savings and Loans Credit Union

12.30–13.45

Women's Health: Addressing Inequity, Ensuring Health

CHAIR

Monira Chowdry, Health Task Group West of England Women's Commission

PANELLISTS

Anne Gachango, Sirona Care & Health

Dr Anju Chowdhary, Wellspring Surgery

Cllr Carole Johnson, Bristol City Council

Jean Smith, Nilaari Agency

Joanna Copping, Bristol City Council

Siny Thankachan, North Bristol NHS Trust

Prof. Nikki Cotterill, University of West of England and Bristol Health Partners

15.30–16.45

Mothering in Difficult Times: Increasing School Exclusions, Decreasing SEND Support.

CHAIR

Priyanka Raval, Bristol Cable

PANELLISTS

Cllr. Christine Townsend, Bristol City Council

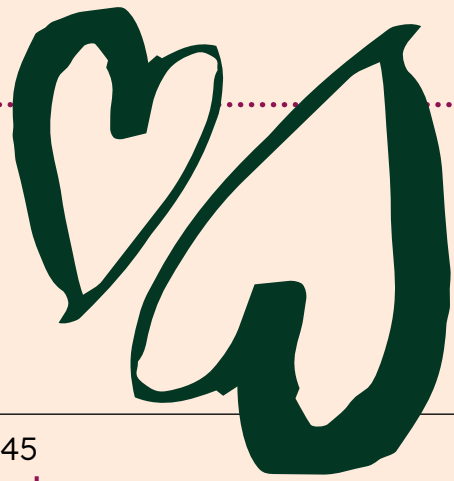
Imrana Bashir, Redfield Educate Together

Lana Crosbie, SENCO

Shanine Wright, Activist

Panel curated by The Bristol Cable





BEIRA ROOM IPO5

11.00–11.45

Herb and Movement

Plants are a wonderful source of nourishment and wisdom. Dance allows us to access and express the narratives we carry, leading to better health. In this session, Insight herbalists Iona and Nathalie offer an opportunity to deepen in relationship with a chosen plant through embodied movement and journeying.

12.00–12.45

The Well of Sovereignty: A Shamanic Drum Journey with Goddess Brigid

Ruth of Starshine Roots guides you on a shamanic drum journey to Goddess Brigid's sacred well, drinking from waters holding millennia of women's wisdom. Through drumming, guided visualisation, and embodied sharing, we explore sovereignty—knowing ourselves deeply enough to truly meet each other.

13.00–13.45

Weaving Our Stories: Art as a Bridge Between Women

Black Women Let Loose Theatre Company workshop will use creativity to express unity and celebrate diversity. Participants are invited to share personal stories of resilience and connection. Together we will create a collage, representing shared values - Our stories are our strength.

14.00–14.45

Butt Naked

This interactive workshops will be based around Integrate UK's award-winning music video, Butt Naked, which was developed by young activists from Integrate UK to highlight the impact of explicit content online on young people and on sexual violence.

15.00–15.45

Singing for the Brain

Led by Bev Burne from the Alzheimer's Society, Singing for the Brain uses music therapy and singing to improve brain activity and wellbeing for those affected by dementia. This taster session includes vocal warm-ups and singing familiar and new songs. No singing experience required—all welcome.

16.00–16.45

Play Voice Movement

Play and creativity can empower women and femme folk to express themselves fully. Inspired by improv theatre, play therapy, intuitive movement, and sound healing, this workshop by Echo Therapies offers a joyful yet meaningful experience. Together, we'll break down barriers, explore our voices, and awaken powerful parts of ourselves waiting to be discovered.

LADY MAYOR'S PARLOUR

11.00–11.45

Sound Journey with Liv Waa

A nourishing sound journey to open the day. Gongs, bowls and soft percussion guide you into calm awareness, grounding the body and settling the nervous system before a full programme of inspiration, learning and connection.

12.00–12.45

Self-Care is a Right: Socio Aesthetic Workshop

Social beauty practitioner, Natacha Sullivan, invites women to pause, nurture themselves, and honour their hands. Through a simple manicure and gentle hand massage, participants reconnect with their bodies, celebrate their strength, and experience a quiet, caring moment for themselves reminding them that taking care of themselves is a beautiful act.

13.00–13.45

Heartfulness Relaxation and Meditation

Discover the physical, emotional, and mental benefits of Heartfulness relaxation and meditation. Learn practical techniques to integrate into your daily routine. This workshop includes an introduction, guided relaxation, meditation session, and take-home tools.

14.00 onwards

Massage

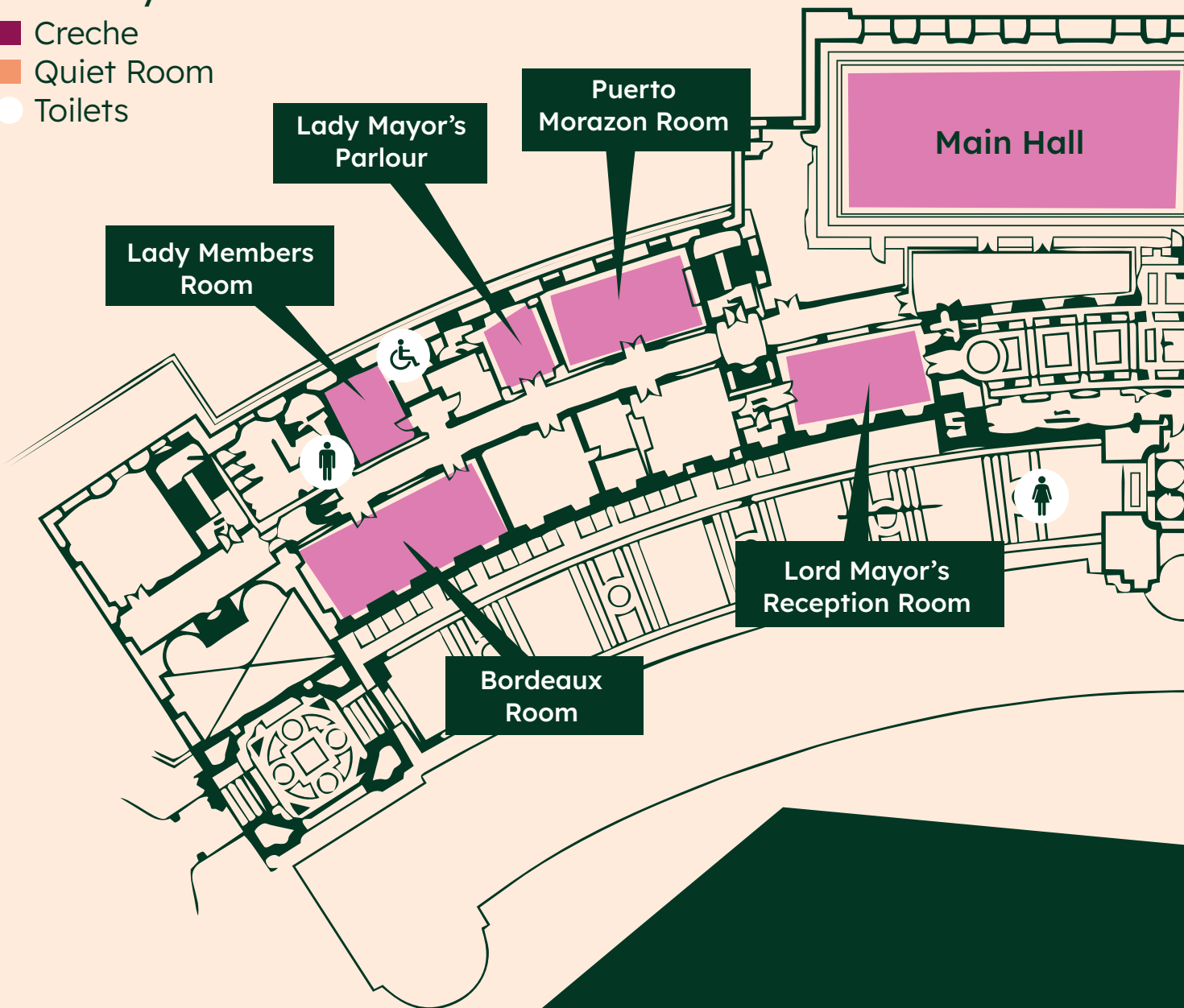
Short Indian Head Massage, and seated back, neck and shoulder massage available from Azeb Tefera, Sophie Shirt and Revitalise Massage. Bookable on a first-come-first-served basis. All treatments are performed fully clothed and are oil-free.



EVENT MAP

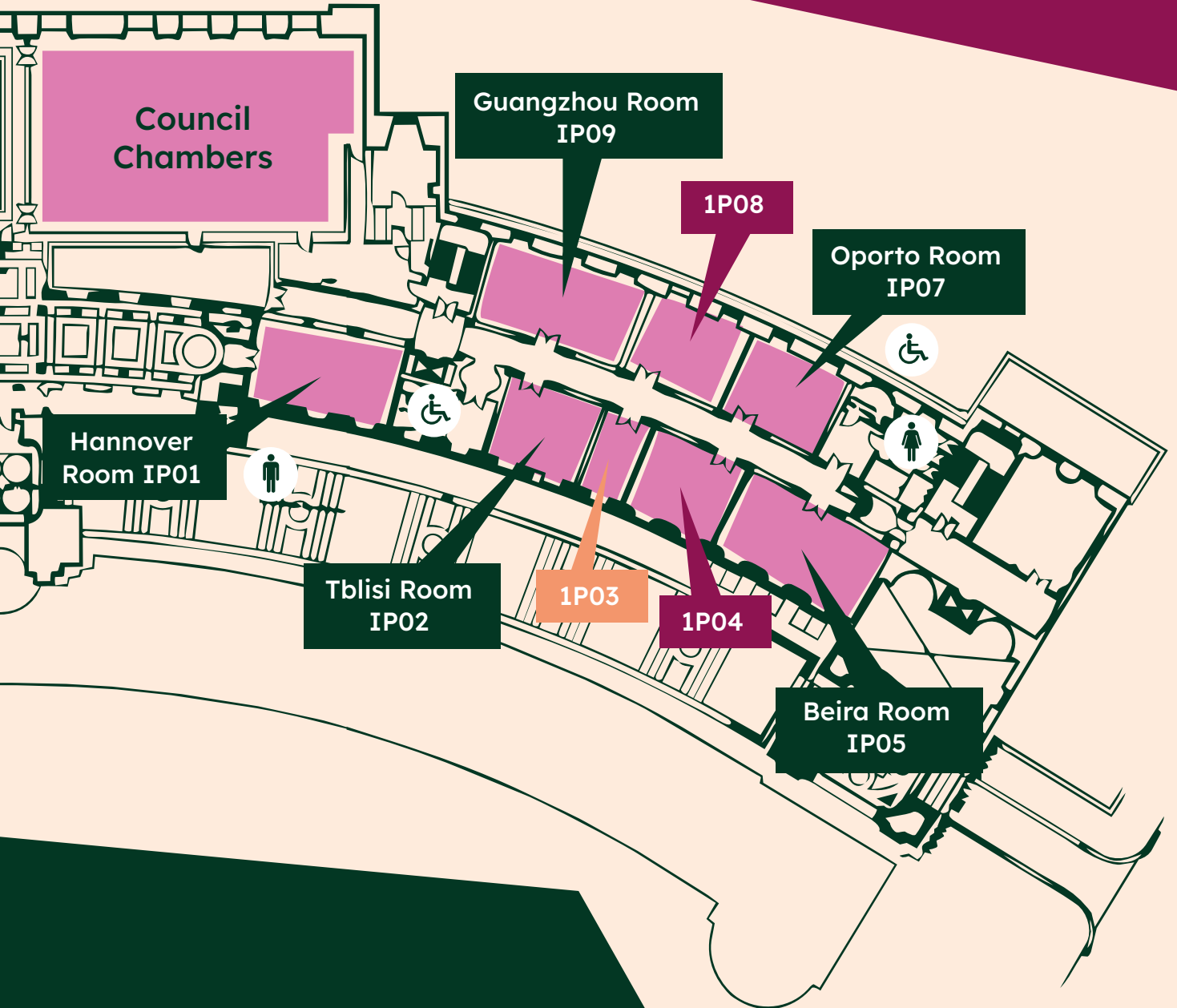
Room Key:

- Creche
- Quiet Room
- Toilets



COLLEGE

PARK STREET →



GREEN

PUERTO MORAZON

11.00-11.45

Morning Movement by Eri

Eri from SARSAS will be offering an inclusive space for meditation and movement to begin the day.

12.00-12.45

Conversations with Children: Consent & the Body

Some conversations are trickier than others. Join SafeLink to explore and discuss how best to talk to young children about the meaning of consent and body autonomy.

13.00-13.45

The Power of Group Work, Creativity and Play in Feeling Connected and Calm Delivered by Susannah

Curious about creativity and wellbeing? Join SARSAS for this interactive session. Build The World's Best Tower with LEGO, explore Zentangles, a calming doodling practice, and reflect on rhythmic breathing to reduce stress. Create a breathing pattern keyring as a practical reminder for everyday calm. No experience needed.

14.00-14.45

Tackling Misogyny Workshop

Led by SafeLink, come and discuss the ever-increasing reports of children and young people experiencing everyday misogyny and how this can escalate to incidents of sexual violence and assault.

15.00-15.45

Recognising and Responding: Supporting Survivors in the Workplace

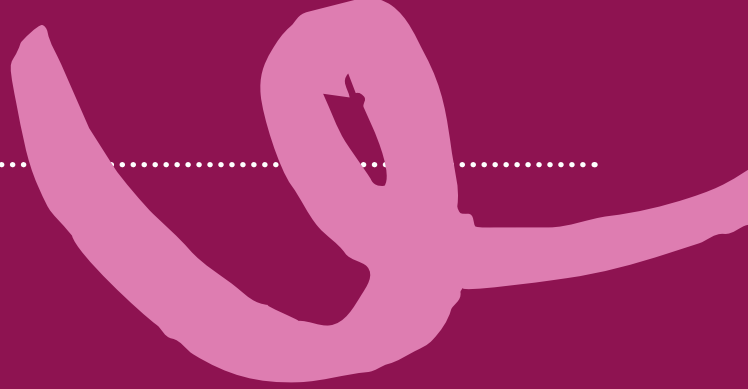
Delivered by SARSAS and Safe Link, this interactive workshop builds understanding of domestic abuse and sexual harassment, their impact, and how to recognise warning signs. You'll learn safe, trauma-informed responses that uphold dignity and choice, and gain practical tools to challenge harmful behaviour, support survivors, and help create a safer, more compassionate workplace culture.

16.00-16.45

Create Your Own Wellness Journal

Journalling can support our mental wellbeing, and encourage us to inspire and be inspired! Come and create your own wellness journal in this creative collaging session with Missing Link. This is a relaxed drop-in session, suitable for all ages that can handle scissors and glue.

This room is curated by SARSAS (Somerset and Avon Rape and Sexual Abuse Support), Next Link and Safe Link.



LORD MAYOR'S RECEPTION ROOM

11.00–11.45

Changing the Story: Bristol Older People's Community Climate Action

A space for women over 55 to connect, share hopes and fears, and contribute to reversing nature decline. Together, we'll listen to each other and create shared writing or art expressing why community climate action matters to us.

12.00–12.45

Redefining the Cycle by Kira Goode

Join Kira, co-founder of Eleria, for an insight-driven workshop exploring menstrual cups, sustainable period products, and women's health. We share what we've learned from real users, open the conversation around stigma and confidence, and empower participants to make informed, sustainable choices.

13.00–13.45

Unite The Union: Campaigning For Women's Issues in the Workplace

Discover how to campaign effectively for women's issues in the workplace and harness the collective power of women's unity. This session explores practical strategies, shared experiences, and ways to challenge inequality, empowering women to advocate for change, strengthen their voice, and create fairer, more inclusive working environments.

14.00–14.45

In Search of Her Stories: Using Archival Records to Research Women's History

The Bristol Radical History Group explores how to undertake women's history using a range of resources. The talk draws on group member Judie's current research into Bristol's Magdalene Homes and the control of working class women's lives and bodies in the 19th century.

15.00–15.45

Dreaming For the Future

This interactive workshop invites participants to dream of the future, a collective act of imagination, care, and resistance. Centring (all) women and non-binary people's experiences of culture, identity and the future—we'll use creative exercises to share, listen, and dream of the future we are longing for.

16.00–16.45

Bristol Portrait Club

Join Giuliana Terran for this fun and relaxed drawing session where we draw 10 minute portraits of each other. Everyone welcome even those that say they can't draw! Materials and drawing boards provided.



HANNOVER ROOM

11.00–11.45

More Than a Camp Fire: Women's Writing Ushering the Change

This workshop with Muneera Pilgrim explores women's writing across history, showing how it fuels change, community, and activism. It highlights diverse cultural traditions and the creative tools women used to confront their times. Ultimately, this workshop urges women to embrace their roles as storytellers and guardians of truth, driving transformation in the world today.

12.00–12.45

Do I Need a Purpose if I'm Not Having Kids?

Women's roles are often closely tied to motherhood — but what if you choose a different path? This interactive session by Bristol Childfree Women explores how childfree women find meaning, identity and fulfilment on their own terms, featuring personal stories and open conversation. Welcoming childfree, childless, undecided women, and anyone curious about purpose beyond motherhood.

13.00–13.45

The Launch of Bristol's Lesbian Archive

This is the launch of Bristol's first Lesbian Archive! The BLAST collective has been busy all year interviewing women and collecting personal stories, music, poetry and precious memorabilia. Some of the exhibits will be on show, and there will be opportunity to share experiences of lesbian and queer women self-organisation.

14.00–14.45

Beer That is Brewed to Give

Join Bristol Beer Factory (BBF) as they share the story of their first IWD brew: COWGIRL SUPERNOVA, a 5% Kolsch IPA. Created by the women of BBF, using Yakima Chief's Pink Boots Hop blend, with 2% of sales supporting Bristol's women and trans communities. When the talking stops, taste it yourself. Cheers team!

15.00–15.45

Community Solutions to Misogyny: How we can Unite Women Through Shared Experiences and Community-based Solutions.

In this workshop by Girlhood Reclaimed & Eastside Community Trust, we explore misogyny's impact and harm in our lives and communities. Through shared experiences, we'll examine how to collectively tackle misogyny and discover practical approaches to challenge it within our communities.

16.00–16.10

Raffle Prize Draw

Find out the raffle prize winners! Purchase a raffle ticket from Bristol Women's Voice stand in the Main Hall.

GUANGZHOU ROOM

11.00–11.45

Family Friendly Boxercise with Jump Start

Jane from Jump Start will provide a taster boxercise session for up to 12 people. Suitable for children 7+.

12.00–12.45

Mindful Pilates with Miriam

Join Miriam for a Mindful Pilates session focusing on mobility, flexibility and core strength to improve your posture and wellbeing. Moving slowly with intention and awareness, this class welcomes all levels, from complete beginners onwards. Please bring a mat and towel for support, and wear comfortable clothes that you can move freely in.

13.00–13.45

Soulful Yoga Practice with Hana Masters from Rebel Girls Club

Hana (she/her) of Rebel Girls Club is an experienced yoga teacher blending her Punjabi heritage with contemporary asana and mindful, embodied practice. Committed to cultural integrity, social justice, and community care, she creates inclusive spaces that nurture resilience, connection, and compassion through thoughtful movement, philosophy, and breath-led exploration.

14.00–14.45

Feminist Self-Defence

A discussion around detection and disruption of misogynistic behaviour by verbal and physical skills by Sister Courage Self-Defence.

15.00–16.30

Discover Women's Fitness with Everyone Active

Come and try out some of our equipment, meet the team, find out more about our local centres, including our women only gym in Easton, and other activities to support healthy lives and having fun.



OPORTO ROOM

11.00-11.45

Art and Music: The Overlap

Join Sophie Boase for a fun, interactive art and music workshop aiming to produce a communal piece of artwork for International Women's Day.

12.00-12.45

Art, Heart and Hope: Wellbeing with Beloved

In Beloved's style, join our reflective art workshop whilst hearing about our work supporting women in the indoor sex industry with signature cupcakes to enjoy and space to chat.

13.00-13.45

Bristol Girls Can: Overcoming Adversity to Rejoin Sport

This talk explores the vital role of physical activity in women's health. We'll discuss exercise across the menstrual cycle, common gynaecological conditions, pelvic floor and breast health, and menopause, offering practical, evidence-based guidance to support confident, informed movement at every life stage for all ages and abilities.

14.00-14.45

Nature & Art for Wellbeing: An Art Workshop for Families to Explore Feminist Sculpture using Clay and Natural Forms

A creative clay workshop with Charlotte Hawke for families to explore important women in their lives. Work collaboratively to create a sculpture of a mother, aunt, grandparent or feminist icon! Adorn your sculpture with natural forms, leaves and flowers, before taking it home to display.

15.00-15.45

Paper Dolls & Maternal Lineage: A Creative Reflection Workshop

Join artist Pippa Grace for a gentle craft-and-conversation workshop exploring maternal lineage. Using simple paper-doll chains, we'll reflect on our relationships with mothers, grandmothers, great-grandmothers and beyond. Inspired by themes from *Mother in the Mother*, this session offers space for connection, storytelling and insight. All welcome.

16.00-16.45

Saree Draping Workshop

Discover the beauty and heritage of Bangladeshi saree traditions in this welcoming, hands-on workshop. Led by the Bangladeshi Bristol Women's Group, participants will learn elegant draping styles, explore cultural meaning, and enjoy a warm, community-centred experience celebrating skill, identity, and artistry.



LADY MEMBERS ROOM

11.00–11.45

Men Acknowledging Patriarchy: Understanding, Unlearning, and Allyship

Through group discussion by Orchid Collective, this workshop aimed at men who are interested in standing up against misogyny, will look at what allyship is, how we can best participate in ending gender based harm, and the harms that can be caused by performative allyship.

12.00–12.45

Stronger Together

This workshop will explore community engagement, overcome challenges and build resilience with insights from Refugee Women of Bristol, a women-led organisation empowering refugee and asylum-seeking women through supportive services, peer networks, skills development and inclusive dialogue that fosters confidence, connection and lasting impact.

13.00–13.45

Empowering Women to Food Equality

This interactive workshop from Carers Support will explore why mothers and women carers are much more likely to experience less choices about the food they eat, buy, and cook.

14.00–14.45

Be-Longing the City: Moving, Knowing, and Re-making the City

Be-longing in Bristol is a participatory workshop in which 12 participants and 2 researchers co-create maps through sharing daily experiences of women's visibility in the city and their motivations and agency to move in and between these places.

15.00–15.45

Belonging in Common: A Celebration of Values

With the Nelson Trust's expertise in supporting women and Prodigal Arts' transformative use of art, this mixed-media workshop invites reflection on the values that shape us. Participants will be invited to create expressive artworks, uncovering the common threads that bring us together.



MEET OUR STALLHOLDERS

Age UK Bristol

A local organisation supporting older people through advice, activities, advocacy, and services that promote independence, wellbeing, and later-life equality.

Autism Independence

A lived-experience-led organisation supporting autistic children and families through advocacy, EHCP guidance, training, workshops, and bridging gaps with statutory services.

Beloved

A charity supporting women working in the indoor sex industry through advocacy, wellbeing support, and specialist services.

Bristol City Council Fostering Services

Providing information and support for people interested in fostering children and young people across Bristol.

Bristol Disability Equality Forum

A Disabled people-led organisation working to improve the lives of Disabled and older people through advocacy, support, and inclusion.

Avon Fire & Rescue Service

Find out information on inclusive employment opportunities, fire safety, and community protection across Avon and surrounding areas.

Bristol Older Peoples Forum

A member-led organisation supporting older people, empowering voices, and challenging ageism.

Bristol Radical History Group

A collective uncovering and sharing Bristol's hidden histories, centring radical perspectives, community storytelling, and people-led historical narratives.

Bristol u3a

A member-led learning community offering educational, social, and creative activities for people in later life and retirement.

Bristol Women's Voice

A women-led membership organisation working to make women's equity a reality through advocacy, connection, and collective action.

Centre for Deaf and Hard of Hearing

A support service providing information, advice, equipment, and resources to Deaf and hard-of-hearing people to enhance independence and connection.

Eleria

A well-being organisation supporting women through sustainable menstrual products, creative education, and holistic approaches promoting health, empowerment, and bodily autonomy.

Girlhood Reclaimed

A feminist organisation supporting girls and young women to reclaim girlhood through creative expression, healing practices, and community-centred empowerment.

Latinas in Bristol & Buenos Aires Latino

An organisation working to improve the quality of life for Latin American women through community support, advocacy, and access to services.

LoveWell

A women-led organisation supporting, employing, and training women who have experienced trauma through trafficking and exploitation.

Maternity and Neonatal Voices Partnerships

An organisation listening to women's and families' experiences to help plan, review, and improve maternity and neonatal care services.

Men Acknowledging Patriarchy

A community education and a safe space for men to talk about issues of misogyny and patriarchy with the aim of dismantling male systems of oppression.

Mothers for Mothers

A Bristol-based charity supporting maternal mental health through peer support, counselling, groups, and helplines for women and birthing people during pregnancy and early parenthood.

Nelsons Trust

A charity offering trauma-informed, gender-responsive safe spaces and holistic support for women facing multiple and complex disadvantages.

Nextlink/Missing Link/SafeLink

A charity providing support for women experiencing homelessness, domestic and sexual abuse, alongside mental health and wellbeing services.

One 25

A service supporting women who are street sex-working through outreach, advocacy, healthcare access, and trauma-informed support.

Period Friendly Places

A Bristol-based charity advancing education on period poverty, dignity, and menstrual health while working to eradicate stigma through community-led awareness and action.

Rebel Girls Club

A welcoming space for anyone who identifies as a woman to share, learn, connect, and grow, offering creative workshops, community events, and support without judgement.

Refugee Women of Bristol

A multi-ethnic, multi-faith organisation that specifically targets the needs of refugee women in Bristol.

MEET OUR STALLHOLDERS

Rockabye

A women-led support group offering welcoming spaces for parents and babies, building connection, confidence, and emotional wellbeing through shared activities and support.

Sadaga

A community group focused on supporting and connecting Arabic-speaking women.

SARSAS

A specialist service that provides confidential support for people aged 13+ affected by rape or sexual abuse, offering counselling, one-to-one support, a helpline, and trauma-informed resources across Somerset and Avon.

Soroptimist

International: Bristol

A movement working to educate, empower, and enable women and girls through advocacy, community action, leadership, and global solidarity.

Stand Against Racism and Inequality

A free, confidential support service for anyone affected by hate crime, offering advocacy, reporting support, and guidance.

The Bridge (SARC)

A specialist centre providing medical, forensic, emotional, and practical support to people who have experienced sexual violence.

Unite the Union:

Women's Committee

A trade union supporting workers across the South West through collective bargaining, workplace representation, and campaigning for fair employment.

WECIL

A user-led organisation supporting Disabled people with information, advice, training, and advocacy to promote independence and inclusion.

Womankind

A service providing free or affordable professional counselling, psychotherapy, and ongoing support for women facing disadvantage, abuse, or mental health challenges.

BRISTOL WOMEN'S VOICE WOULD LIKE TO THANK:



Bristol City Council
for the use of the space

.....



for donating gym membership
worth more than £600

.....

BigGive

Everyone who donated to
our Big Give Campaign
in October 2025

.....



Our sponsor in kind

Raffle prize and food donations:




Avenue Cafe
The Bristolian
Cakesmiths
Cow and Sow
Girls Who Grind Coffee
Kask
Little Victories
Muslims4Bristol
Peggys
Wogan Coffee



BRISTOL WOMEN'S VOICE

Bristol Women's Voice works to make women's equity a reality through **celebrating, connecting** and **campaigning**.

Follow us for the latest

-  @bristolwomensvoice
-  @bristolwomensvoice
-  bristol-women's-voice

Become a member!
bristolwomensvoice.org.uk

Scan to donate

